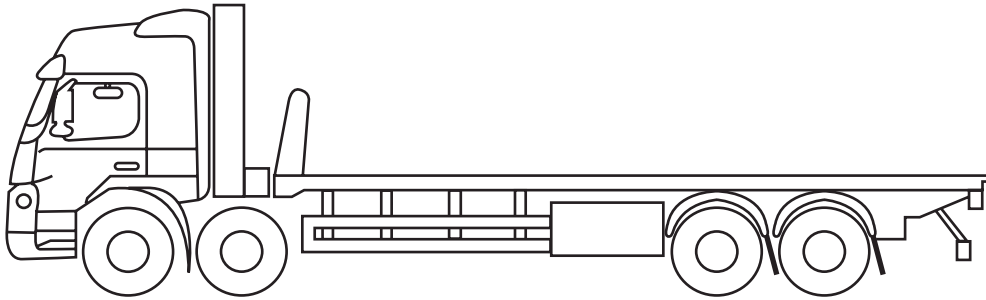


SCANIA R - NJ10 HSF

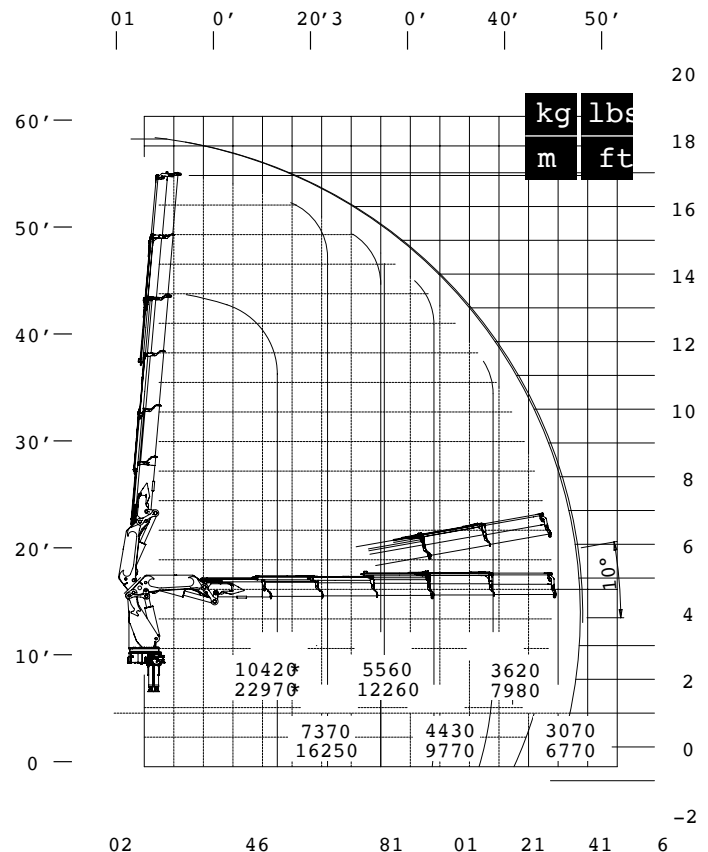


SCANIA R - NJ10 HSF

53 - tonne / metre front mounted 8 wheeler

The PM 53SP is a crane with extremely high performances: big outreach, lifting capacity, operating speed and safety.

In addition, the new electronic system offers greater monitoring power for the operator, including remote control functions.



Technical Specifications (EN 12999 HC1 HD4/B3)

Max. lifting moment	46.3 tm
Hydraulic outreach H	45.5 ft / 13.85m
Hydraulic outreach V	58.9 ft / 17.90m
Max. oil flow	18 gals / min 70 l / min
Max. pressure	4640 Psi / 32 MPa

Slewing system	endless
Slewing moment	33490 ft lbs 45,4 kNm
Max. working heel	8,7 %
Stan. weight no oil tank	112000 lbs / 5080 kg
Oil tank Capacity	57 gals / 215 l