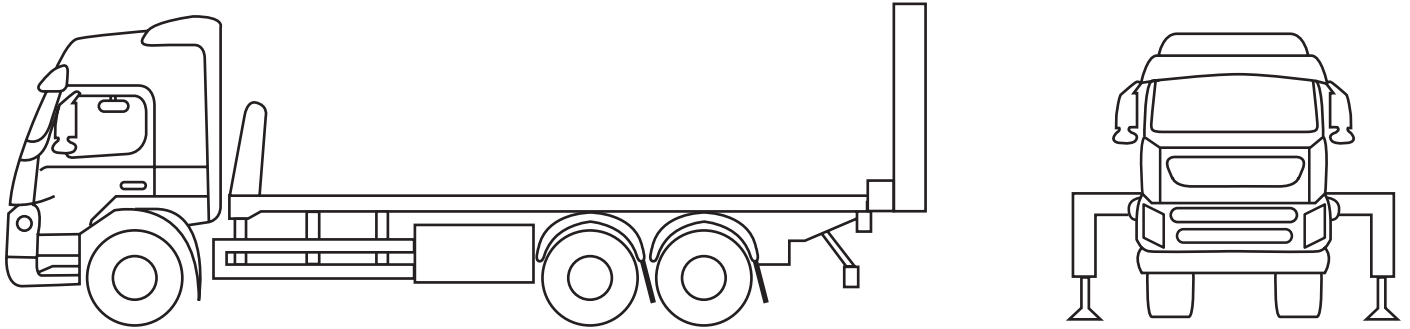


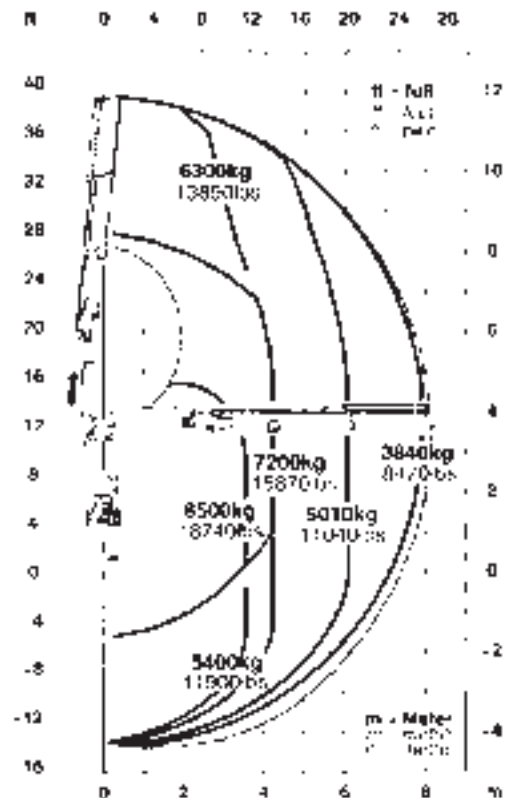
DAF CF 85 - SJ60 XZM



DAF CF 85 - SJ60 XZM

32-tonne / Rear mounted rigid

The PK 32080 stands out due to rugged construction. The double rack and pinion slewing system enables a high slewing moment with a simple construction.



Technical Specifications (EN 12999 HC1 HD4/B3)

Max. lifting moment	57.8mt / 567.0 kNm	Stabilizer (std.)	7.8 m
Max. lifting capacity	22200 kg / 217.8 kN	Fitting space requir.	min. 1.60 m/max 1.71 m
Max. hydraulic outreach	16.2 m	Width folded	2.55 m
Max. manual outreach	23.1 m	Max. pressure	350 bar
Slewing angle	370'	Rec pum capacity	From 80 to 100 l/min
Slewing torque	6.6 mt/65 . 0 kNm	Max. lifting moment	5130 kg