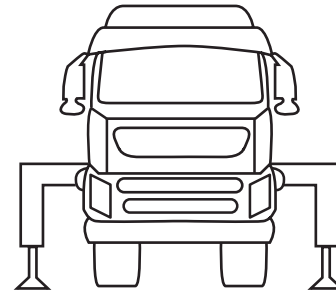
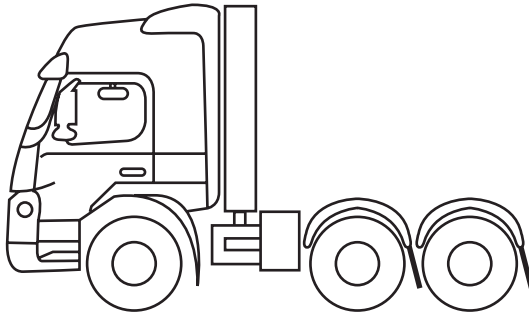


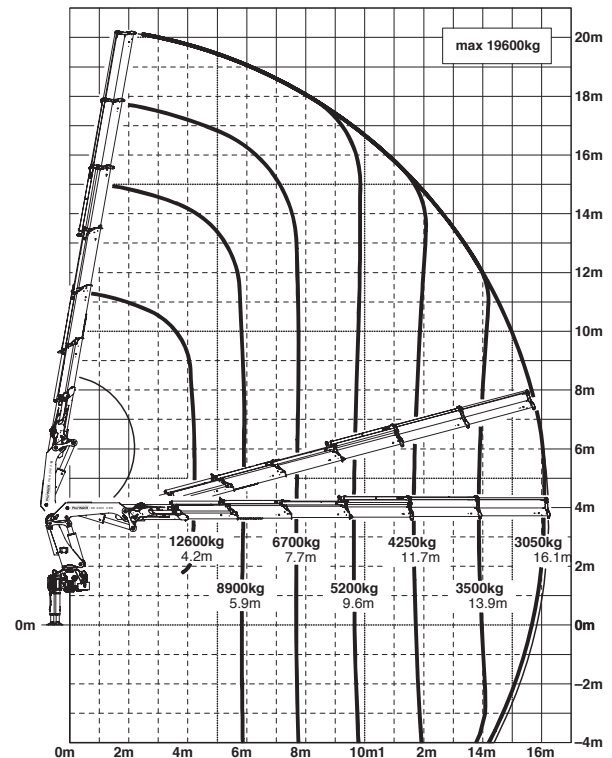
Iveco Stralis - SN13 AMU



Iveco Stralis SN13 AMU

62-tonne / mounted behind cab

The PK 62002 EH stands out due to rugged construction combined with state-of-the-art high performance equipment. Its compact boom system with up to six hydraulic extensions provides it with an ideal power / weight ratio.



Technical Specifications (EN 12999 HC1 HD4/B3)

Max. lifting moment 57.8mt / 567.0 kNm

Max. lifting capacity 22200 kg / 217.8 kN

Max. hydraulic outreach 16.2 m

Max. manual outreach 23.1 m

Slewing angle 370'

Slewing torque 6.6 mt/65 . 0 kNm

Stabilizer (std.) 7.8 m

Fitting space requir. min. 1.60 m/max 1.71 m

Width folded 2.55 m

Max. pressure 350 bar

Rec pum capacity From 80 to 100 l/min

Max. lifting moment 5130 kg