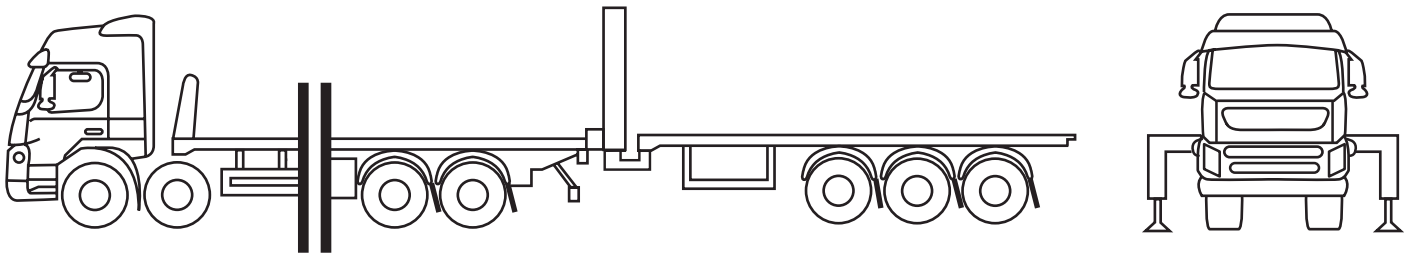


## SCANIA - T100 HTF

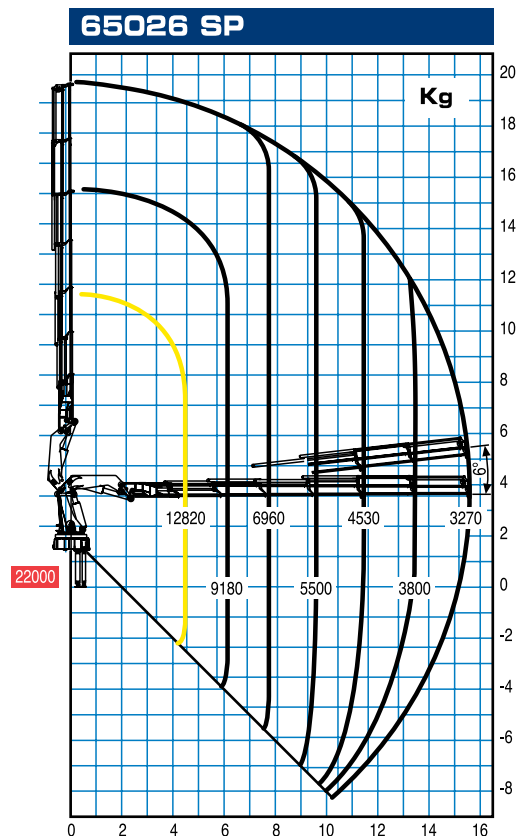


### SCANIA - T100 HTF

Rear steering back axel

Rear mounted PM65024SP

The PM65024SP has been developed with CAN-BUS technology and built using state-of-the-art quality components



### Technical Specifications (EN 12999 HC1 HD4/B3)

Max. lifting capacity 13850 kg / 4250mm

Max. hydraulic outreach 11200 m / 5100kg

Main Stabilizer span 8700mm

Aux Stabilizer span 7100mm

Stabilizer pad size 600 x 600mm

Stabilizer max reaction : 201.46kN

Gross Vehicle Weight 32000kg

Truck Tare Weight 21000kg

Truck payload (solo) 11000kg

Gross Train Weight : 44000kg

Train Tare Weight 25750kg

Train payload 18250kg spread overall