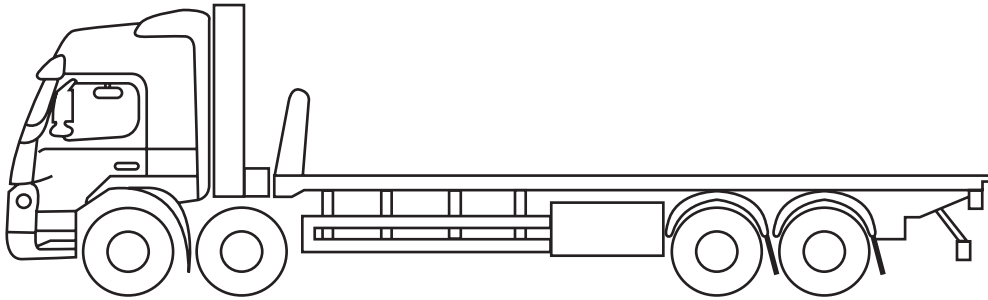


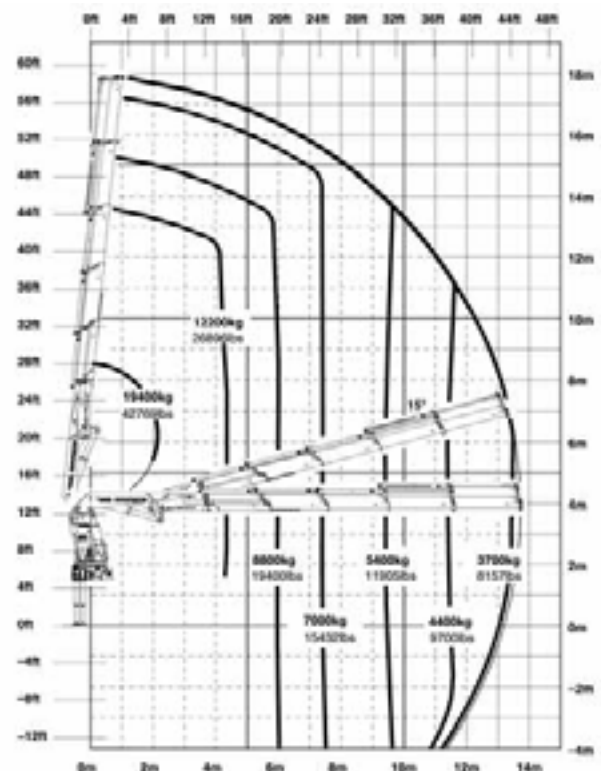
IVECO TRAKKER - T200 HTF



IVECO - T200 HTF

60 - tonne / metre rigid front mounted 8 wheeler

The PK 60002 performance opens up a broad spectrum of opportunities for its crane operators: 20.4 m hydraulic outreach and a lifting moment of 58.3 mt.



Technical Specifications (EN 12999 HC1 HD4/B3)

Max. lifting moment	58.3mt / 572.0 kNm	Stabilizer (std.)	8.6 m
Max. lifting capacity	21000 kg / 206.0 kN	Fitting space required	min. 1.51 m/max 4'11 m
Max. hydraulic outreach	13.6 m	Width folded	2.55 m
Max. manual outreach	13.6 m	Max. pressure	350 bar
Slewing angle	endless	Rec pum capacity	From 80 to 100 l/min
Slewing torque 1 GEAR	4.5 mt/44.1 kNm	Dead weight crane	4956 kg
Slewing torque 2 GEAR	7.0 mt/68.7 kNm		