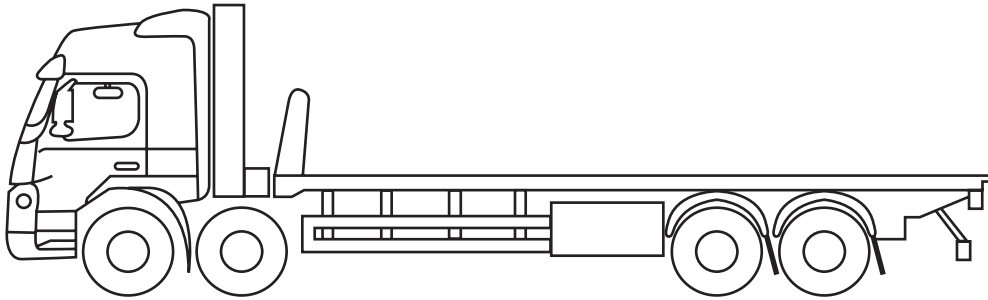


Scania - T600 HTF

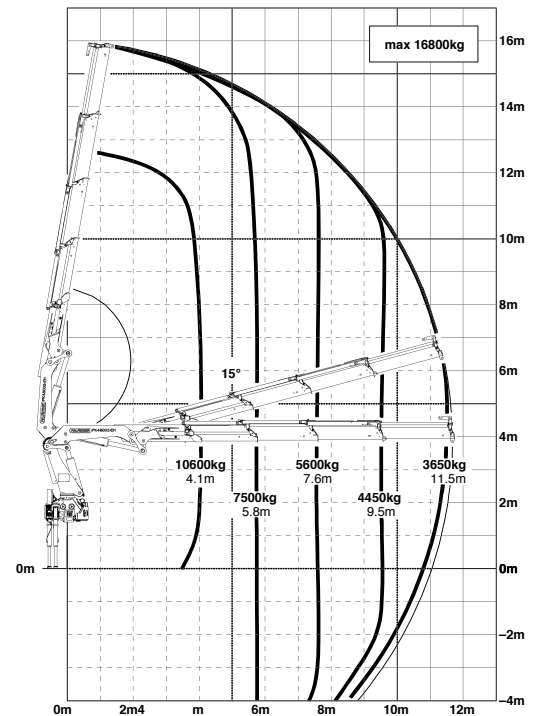


Scania T600 HTF

8x2 rigid plant truck
equipped with a PK48002EH lorry loader

Vehicle Specifications

- 22ft body with double folding ramps
- Winch equipped to allow unpowered vehicles and loads to be loaded on wheels
- Edge protection to prevent falls from heights
- ADR equipped
- Euro 6 compliant to ensure the lowest emission levels
- Fully equipped with FOR's standard camera systems and side scan to protect vulnerable road users



Technical Specifications (PK48002EH)

Max. lifting moment -

Max. lifting capacity -

Max. hydraulic outreach -

Max. manual outreach -

Slewing angle -

Slewing torque -

Stabilizer (std.) -

Fitting space requir. -

Width folded -

Max. pressure -

Rec pum capacity -

Max. lifting moment -