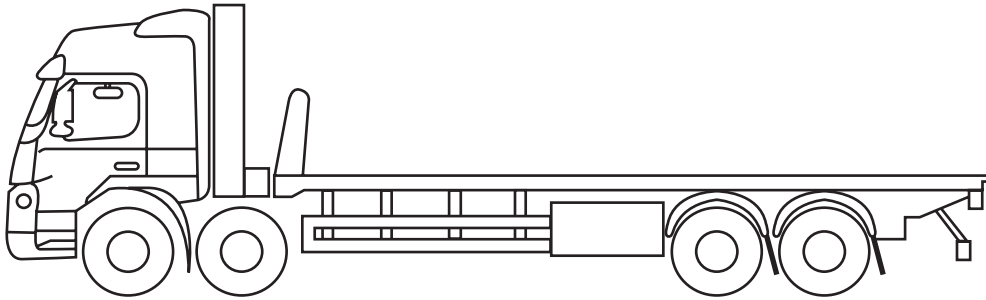


## VOLVO - T30 HTF



### VOLVO - T30 HTF Rigid 8x2 rear steer

Hiab 658 EP-6

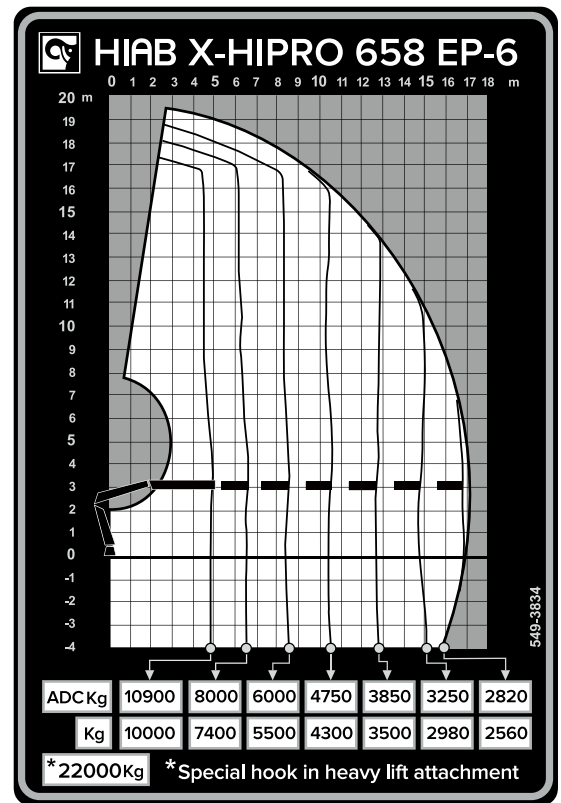
Draw bar capability

23ft bed

20ft Draw bar trailer

#### Features of truck:

- Euro 6 compliant for access in to clean air zones and ULEZ's
- FORS compliant with 360 deg camera system
- Side scan to detect vulnerable road users
- Audible warning for the vehicle turning left
- Hydraulic pull out for long loads up to 32ft long
- Limited edition 30 year anniversary cab design – Thunderbirds
- Fall prevention system on both the truck and trailer
- Latest Ishift gearbox
- Rear steering axle to improve manoeuvrability



### Technical Specifications (HIAB 658 EP-6)

Max. lifting moment	544kNm	Gross Vehicle Weight	32,000kg
Max. lifting capacity	2820kg	Truck payload (w. trailer)	17.3t
Max. hydraulic outreach	16.9m	Truck payload (solo)	9.8t
Aux Stabilizer span	5m	Gross Train Weight	44,000kg
Stabilizer pad size	600 x 600mm	Train Tare Weight	26,700kg
		Train payload	17,300kg spread overall