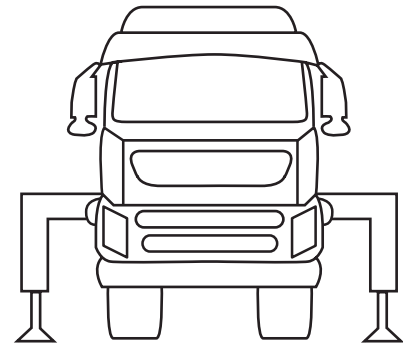
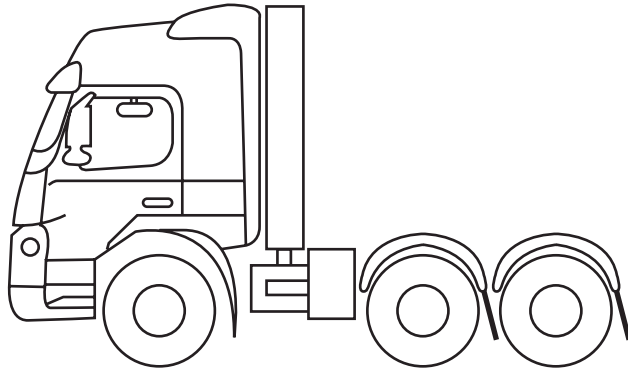


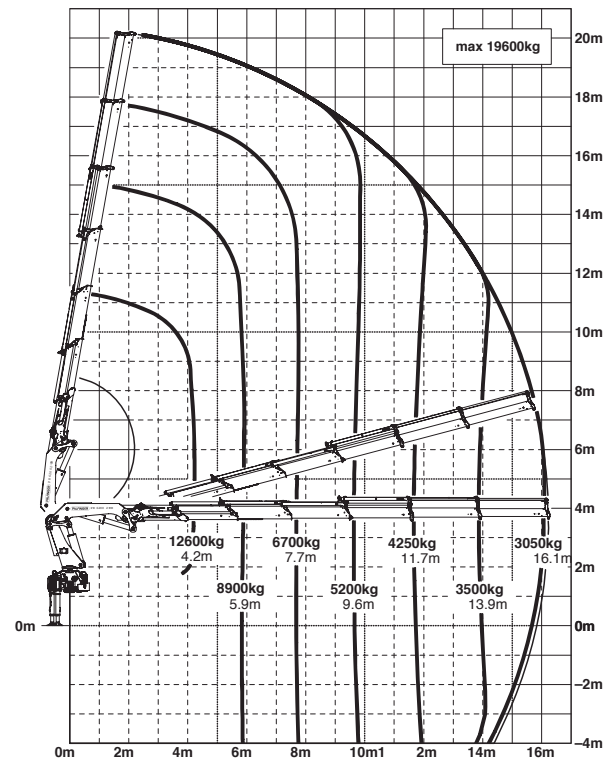
DAF XF - D1 HTF



DAF XF - D1 HTF

62 - tonne / metre front mounted tractor unit

The PK 62002 EH stands out due to rugged construction combined with state-of-the-art high performance equipment. Its compact book system with up to six hydraulic extensions provides it with an ideal power / weight ratio.



Technical Specifications (EN 12999 HC1 HD4/B3)

Max. lifting moment	57.8mt / 567.0 kNm	10.3m ext. trailer weight	9,060 kg
Max. lifting capacity	22200 kg / 217.8 kN	Width folded	2.55 m
Max. hydraulic outreach	16.1 m	Payload	14810 kg
Slewing angle	370'	Truck Weight	20,130 kg
Slewing torque	6.6 mt/65.0 kNm	Max. lifting moment	5130 kg
		Stabilizer (std.)	7.8 m