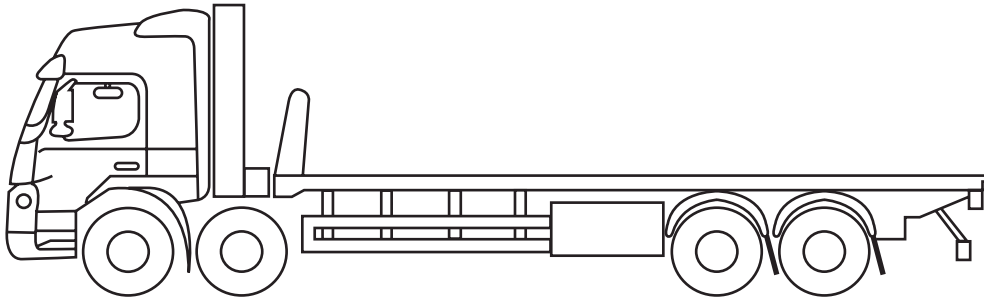


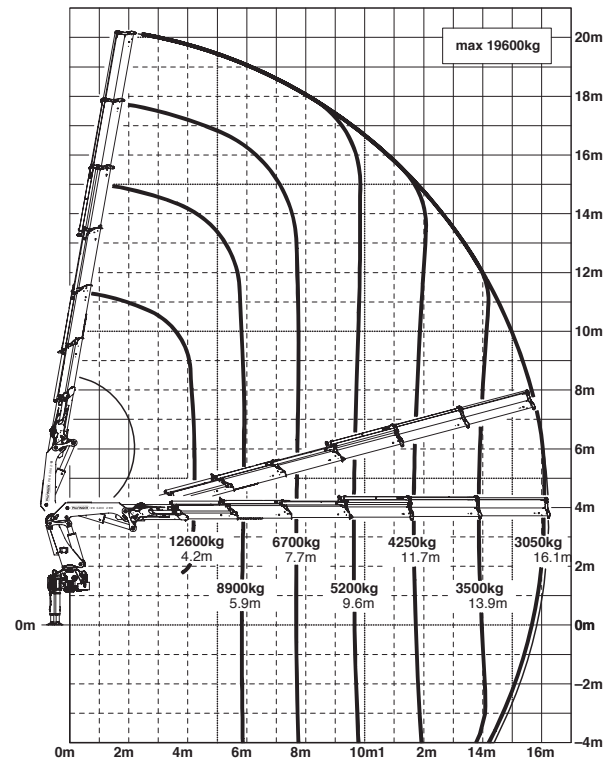
Scania R Series - T300 HTF



Scania R Series T300 HTF

62 - tonne / metre front mounted 8 wheeler

The PK 62002 EH stands out due to rugged construction combined with state-of-the-art high performance equipment. Its compact boom system with up to six hydraulic extensions provides it with an ideal power / weight ratio. This vehicle has Drawbar capability, increasing the load bed by 20 foot.



Technical Specifications (EN 12999 HC1 HD4/B3)

Max. lifting moment	57.8mt / 567.0 kNm	Stabilizer (std.)	7.8 m
Max. lifting capacity	22200 kg / 217.8 kN	Fitting space requir.	min. 1.60 m/max 1.71 m
Max. hydraulic outreach	16.2 m	Width folded	2.55 m
Max. manual outreach	23.1 m	Max. pressure	350 bar
Slewing angle	370'	Rec pum capacity	From 80 to 100 l/min
Slewing torque	6.6 mt/65.0 kNm	Max. lifting moment	5130 kg