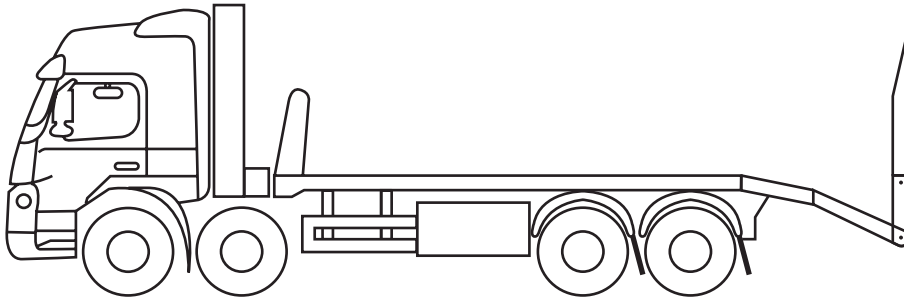


Scania - T600 HTF

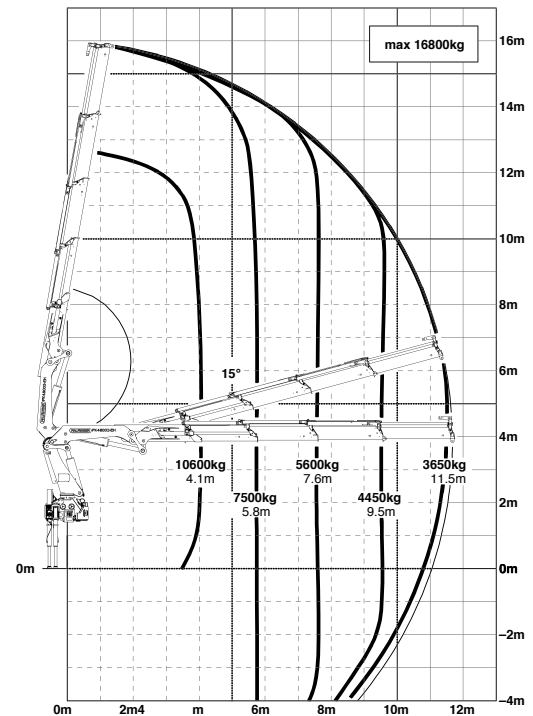


Scania T600 HTF

8x2 rigid plant truck
equipped with a PK48002EH lorry loader

Vehicle Specifications

- 22ft body with double folding ramps
- Winch equipped to allow unpowered vehicles and loads to be loaded on wheels
- Edge protection to prevent falls from heights
- ADR equipped
- Euro 6 compliant to ensure the lowest emission levels
- Fully equipped with FOR's standard camera systems and side scan to protect vulnerable road users



Technical Specifications (PK48002EH)

Max. lifting moment	46.5mt / 456.3kNm
Max. lifting capacity	10600kg at 4.2m
Max. hydraulic outreach	11.8m
Slewing angle	400°
Slewing torque	5.5mt / 54.0kNm

Stabilizer (std./max.)	7.4m
Fitting space requir.	1.45m / 1.59m
Width folded	2.51m
Max. pressure	350bar
Rec. pum capacity	from 80l/min